

Employment Skills

Transition-Age Youth

Strategically Aligned Evidence-Based

Prevention Homeless

Foster

Outpatient
Psychiatric
Services

ADULTS

Children
Treatment

CITY OF ST. LOUIS

Jail Diversion New Americans Behavioral Health

Thriving & Connecting Ready for Work Substance Abuse Treatment

Perinatal Mental Health Trauma-Focused

Teenagers

Recovery
Integrated
Care

CHILDREN

Outpatient
Therapeutic
Services

Intensive Case
Management
Early Intervention

Learning & Leading

Educational Achievement

School-Based

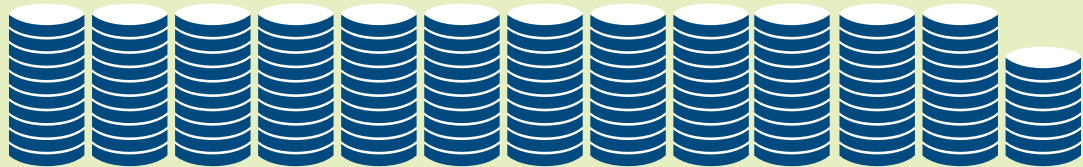


Saint Louis Mental Health Board

FY2016 REPORT TO THE COMMUNITY

IN 2016...

The Saint Louis Mental Health Board (MHB) by overseeing special taxes and other public other support to organizations that provide



\$12,516,720

INVESTED IN COMMUNITY SERVICES

84 PROGRAMS SUPPORTED



8,510 ADULTS WERE IMPACTED

OUTCOME EXAMPLES INCLUDE:



2,684 ADULTS

ACCESSED THERAPEUTIC
MENTAL HEALTH SERVICES

1,973 ADULTS

IMPROVED MENTAL
& PHYSICAL HEALTH

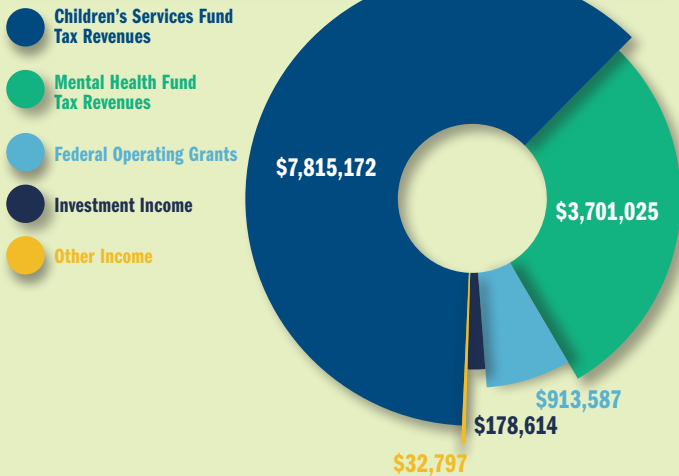


4,929 ADULTS

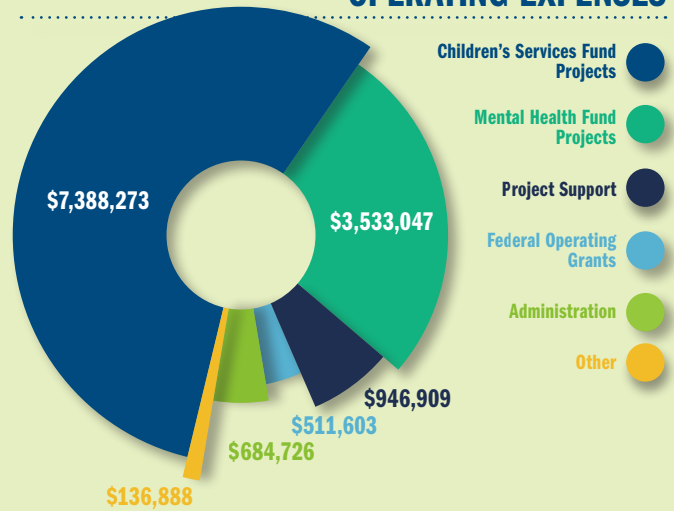
WERE TRAINED ON
TRAUMA OR PARENTING

completed our 22nd year in service to the residents of the City of St. Louis
 funds for behavioral health and children's services. MHB offers funding and
 life-changing services leading to an equitable, thriving community.

OPERATING REVENUES



OPERATING EXPENSES



TOTAL REVENUE/EXPENSE STATEMENT
 FY2016 July 1, 2015 – June 30, 2016

OUTCOME EXAMPLES INCLUDE:



4,101 CHILDREN
 WERE SAFE AND NURTURED
 WITH HEALTHY CONNECTIONS
 TO OTHERS

**2,735 CHILDREN
 AND YOUTH**

WERE POSITIVELY ENGAGED
 IN SCHOOL OR ON TRACK
 TO GRADUATE HIGH SCHOOL



1,501 YOUTH
 DEVELOPED LEADERSHIP
 AND JOB SKILLS

**9,582 CHILDREN
 WERE IMPACTED**



AGENCIES FUNDED IN 2016

22nd Judicial Court of Missouri,
Family Court-Juvenile Division

Aim High St. Louis

Area Resources for Community
and Human Services (ARCHS)

Behavioral Health Response, Inc.

Bethany Christian Services

Big Brothers Big Sisters
of Eastern Missouri

Bilingual International Assistant Services

Bridgeway Behavioral Health

Center for Survivors of
Torture and War Trauma

Children's Advocacy Services
of Greater St. Louis

Children's Home Society of Missouri

City of St. Louis Department
of Human Services

College Summit, Inc.

Covenant House of Missouri

Doorways

EducationPlus Resources

Employment Connection

Epworth Children & Family Services, Inc.

Family Care Health Centers

Family Resource Center

Fathers' Support Center, St. Louis

Foster and Adoptive Care Coalition

Great Circle

Greater St. Louis Community Foundation

Independence Center

International Institute of St. Louis

Kids In The Middle

Legal Services of Eastern Missouri

Lutheran Family and Children's Services
of Missouri

Marian Middle School

Maternal, Child and Family
Health Coalition

MERS/Missouri Goodwill Industries

Migrant and Immigrant
Community Action Project

Missouri Department of Mental Health

Missouri Institute of Mental Health

Myrtle Hilliard Davis
Comprehensive Health Centers

NAMI St. Louis

Northside Youth and
Senior Service Center, Inc.

Nurses for Newborns

One Hope United

Our Little Haven

Places for People, Inc.

Preferred Family Healthcare, Inc.

Queen of Peace Center

Safe Connections

Saint Louis University

Saints Teresa and Bridget Church

South Broadway Art Project

St. Francis Community Services

St. Louis Internship Program

St. Louis Public Schools Foundation

St. Louis Story Stitchers

United 4 Children

United Way of Greater St. Louis, Inc.

University of Missouri – St. Louis,
Community Psychological Services

Vision for Children at Risk

Voices for Children

Washington University – The SPOT

Yeyo Arts Collective

Youth Council for Positive Development

BOARD OF TRUSTEES

Marylou Calzaretta

Terrell Carter

Steve Doss

Marguerite Grandelious

Linda Grayson

Carolyn Jackson

David Laslo

Jennifer Matthew

Phil Minden

Nina North Murphy

Carla Rose

Donna Schmitt

Roy Wilson

Jama Dodson, *Executive Director*



Saint Louis Mental Health Board

333 S. 18th Street, Suite 200
The Annex at Union Station
St. Louis, MO 63103

phone: 314-535-6964 | fax: 314-535-6584
www.stlmhb.com